



## Coastal Race 2015 Lizard Point to Cowes, UK

### SAILING INSTRUCTIONS

The Transatlantic Race 2015 sailing instructions will apply to the Coastal Race except as changed below.

#### **CHANGE SI 2.1(a) to read:**

2.1 The rules as defined in *The Racing Rules of Sailing* (RRS) as modified below:

- a) After finishing the Transatlantic Race and starting the Coastal Race, RRS Part 2 is replaced by Part B, the Steering and Sailing Rules, of the International Regulations for the Prevention of Collision at Sea (IRPCAS) from sunset on the first day of racing until a yacht is within five (5) nautical miles of the finishing line at the Royal Yacht Squadron;

#### **ADD SI 2.1(c)(iii):**

- 2.1 c) iii) After finishing the TR2015, and prior to proceeding on the Coastal Race, a yacht may offload one or more crew member(s) and the personal gear of that crew member(s) only. No gear or supplies may be unloaded. Any arrangement to do so, and any risk in doing so, is solely the responsibility of the competing yacht. This change RRS 41.

#### **CHANGE and RENUMBER SI 2.8 to 2.11 as follows:**

2.8 The TR2015 Sailing Instructions;

2.9 These Coastal Race Sailing Instructions.

2.10 When there is a conflict, succeeding rules in the above list shall take precedence. This changes RRS 63.7.

2.11 Rules documents are posted on the Transatlantic Race 2015 website.

**4 DELETE**

**5 DELETE**

**6 DELETE**

**7 STARTING AREA**

The race will start for each yacht at the moment they finish the Transatlantic Race at Lizard Point.

**8 THE COURSE**

8.1 The course will be as follows:

- Start off Lizard Point, UK.
- Finish off the Royal Yacht Squadron in Cowes, UK.

8.2 Restricted Areas or Actions – Yachts shall NOT:

- a) pass to the South of Snowden Buoy off Cowes. This is after the finishing line and just north of the Cowes Breakwater Exclusion Zone.
- b) pass to the north of the beacon marking the obstruction of iron piles (Sowley Boom) to the East of Lymington near Durns Point.
- c) anchor or kedge in the cable and pipeline area between Stone Point and Gurnard Bay. This area is shown on Admiralty Chart 2036 and is between the line from Stansore Point to Egypt Point and the line from Inchmery House Lepe to Thorness Bay.

8.3 The course length is approximately 164 NM.

## 9 DELETE

## 10 THE START

10.1 There will be no starting sequence or other race committee signals for the Coastal Race.

10.2 Each yacht's finishing time in the TR2015 at Lizard Point will be used as her starting time for the Coastal Race.

## 11 THE FINISH

11.1 The finishing line is formed by bringing the Royal Yacht Squadron's flagstaff into line with the white line on the orange diamond on the Castle. See diagrams in SI Appendix A.

**Outer limit:** (which is not on the finishing line) Williams Shipping Buoy; leave to port.

**Inner limit:** RYS flagstaff; leave to starboard.

**Finishing at night:** As an aid to competitors, vertical light beams are installed at the RYS to identify the finishing line transit. The intensity of the light beam increases as you approach the line but the lights are momentarily obscured by the forward mast when you are on the line. The lights are navigational aids only and do not constitute the finishing line. Any failure of this equipment shall be disregarded.

11.2 Yachts shall contact the finishing Committee on VHF Channel 72 when they are approximately 5 NM from the finishing line. If no contact is made, try again on VHF as you approach the finishing line.

11.3 After finishing, the Welcoming Committee will greet the finished yachts at Trinity Landing. See SI Appendix A.

11.4 The Race Committee will record each yacht's finishing time (GMT/UT) and may use the times from the tracking units to supplement the finishing information. If finishing at night, a yacht shall shine a bright light on her sails when approaching and crossing the finishing line.

11.5 Yachts shall record their own finishing time (GMT/UT) as they cross the finishing line from west to east and enter that time on their Certificate of Compliance provided at registration.

## 16 COMPLIANCE CERTIFICATE

The Certificate of Compliance Form shall be completed and submitted no later than 36 hours after finishing. Each yacht shall complete the online [Certificate of Compliance Form](#) or complete the form contained in each yacht's registration packet and deliver to RYS Race Headquarters. The Certificate of Compliance Form pertains to both the Transatlantic Race and the Coastal Race.

© Copyright New York Yacht Club 2015. All Rights Reserved.

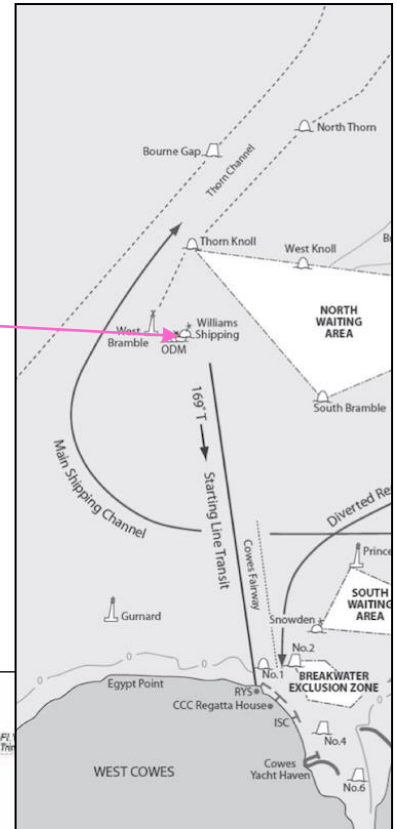
*New York Yacht Club Regatta Association, Inc.; New York Yacht Club; NYYC; Harbour Court, club burgee; certain other logos and marks are trademarks or registered trademarks of the New York Yacht Club in the United States and other countries. All Rights Reserved. Use is prohibited without written permission of the Secretary of the New York Yacht Club.*

# SAILING INSTRUCTIONS – Appendix A

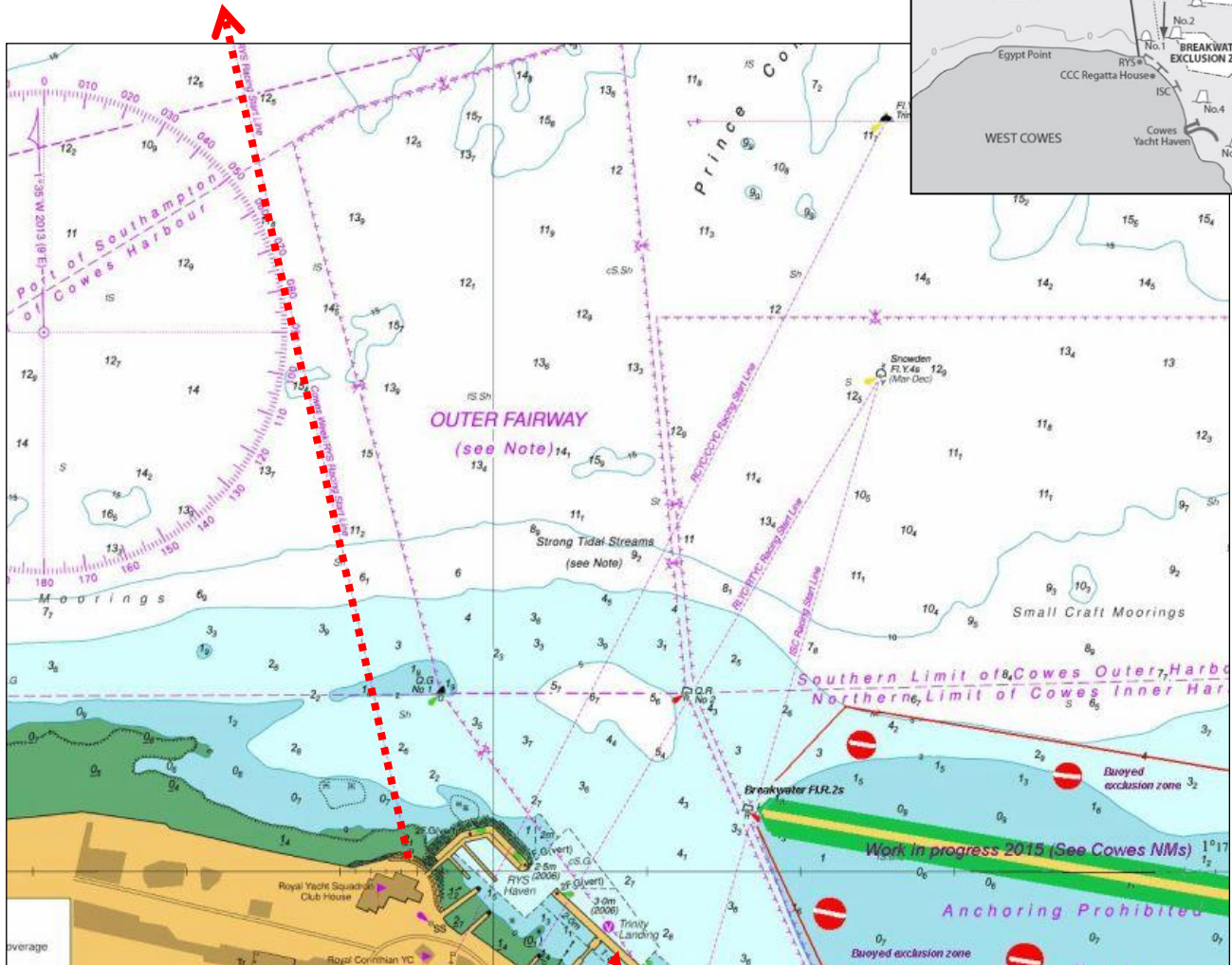
## FINISHING LINE & COWES HARBOUR CHARTLET



Williams Shipping Buoy



RYS finishing line - 169° T



Trinity Landing

## **SAILING INSTRUCTIONS – Appendix B**

### **NOTICE TO MARINERS**

Competitors are reminded of their responsibility to take account of Notice to Mariners and should be particularly aware of:

#### **Southampton Precautionary Area (Thorn Channel)**

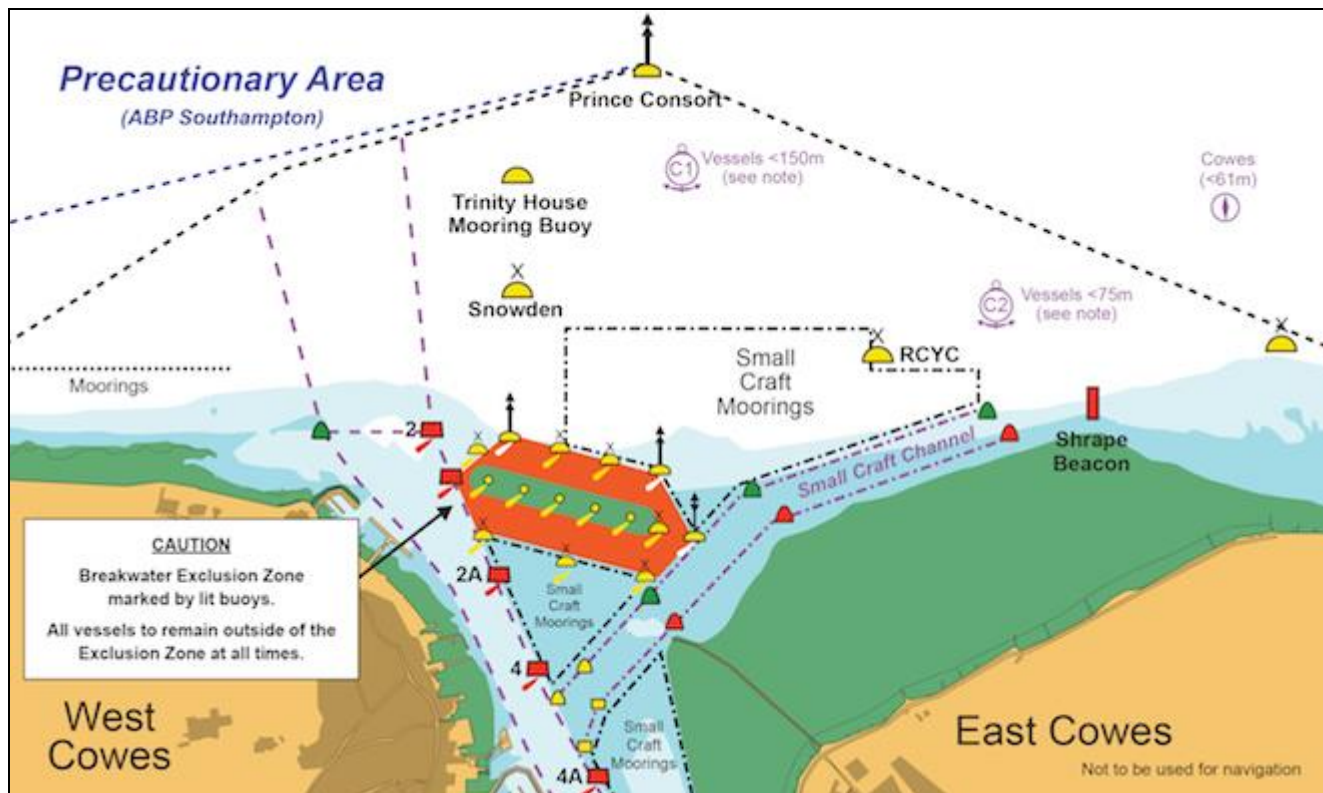
Competitors are reminded to maintain a constant watch for shipping movements, particularly in the Port of Southampton Precautionary Area (Thorn Channel). Your attention is drawn to the ABP Notice to Mariners No.3 2014 which covers the movement of shipping and the accompanying sound signals that may be heard. See <http://www.southamptonvts.co.uk/admin/content/files/NTMs/2014%20No%2003.pdf>

#### **Cowes Harbour Breakwater Exclusion Zone**

Competitors are reminded that they are required to stay out of the “Exclusion Zone”, at the entrance to Cowes Harbour at all times. Your attention is drawn to Cowes Harbour Commission Notice to Mariners No. 05(T) of 2015 and its subsequent amendments, which covers the “Exclusion Zone”, the navigation marks and the light characteristics.

See:

[http://www.cowesharbourcommission.co.uk/local\\_notice\\_to\\_mariners\\_no\\_05t\\_of\\_2015](http://www.cowesharbourcommission.co.uk/local_notice_to_mariners_no_05t_of_2015)



#### **Cowes Harbour Commission Notice to Mariners:**

[http://www.cowesharbourcommission.co.uk/local\\_notices\\_to\\_mariners](http://www.cowesharbourcommission.co.uk/local_notices_to_mariners)